

SIM-T02 GSM Modem PPP Connection Guide

TN-010



cybroTech

© 2007 Cybrotech Ltd

Cybrotech Ltd
14 Brinell Way, Harfreys Industrial Estate
Great Yarmouth, Norfolk, Nr31 OLU - UK
tel: +44 (0)1493 650 222
www.cybrotech.co.uk
info@cybrotech.co.uk

Safety information

Radio device has limitations in the vicinity of electronic devices:

- Switch the modem off when you are in the hospital or near medical devices like pacemakers. The modem may interfere with the operation of these devices.
- Switch the modem off when flying. Secure it so that it cannot be switched on inadvertently.
- Switch the modem off when you are near gas station, fuel depots, chemical plants or blasting operations. The modem can disturb the operation of technical equipment.
- Interference can occur if the device is used near televisions or radios.
- In order to avoid possible damage, we recommend that you only use the specified accessories. These have been tested and have shown to work well with the modem.

Note: Warranty does not apply in the event of improper use.

1 Introductions

This document describes how to establish a PPP connection with Microsoft Windows XP Professional using the prototype of GSM/GPRS. Configurations and settings for other operating systems (Windows 95/98/NT4.0/2000) may slightly differ, but the general proceeding is similar.

1.1 Abbreviations

APN	Access Point Name
CHAP	Challenge Handshake Authentication Protocol
CID	Context Identity
DHCP	Dynamic Host Configuration Protocol
DNS	Domain Name Server
DSB	Developer Support Box
GPRS	General Packet Radio Service
GSM	Global System of Mobile Communication
IP	Internet Protocol
OS	Operating System
PDP	Packet Data Protocol
PIN	Personal Identification Number
PPP	Point to Point Protocol
QoS	Quality of Service
RAS	Remote Access Service
ROM	Read Only Memory
SIM	Subscriber Identity Module
TCP	Traffic Control Protocol

2 What you need

1. GPRS settings from your network provider

Before you set up your device to access the GPRS network, contact your network provider to obtain the GPRS service.

2. Modem installation and configuration

You will need to set up the modem driver. Follow the steps in chapter 3.

Note: Administrator's rights for the operation system may be needed in order to install the modem driver. Connect your local system administrator for advice.

3. Dial-Up network installation and configuration

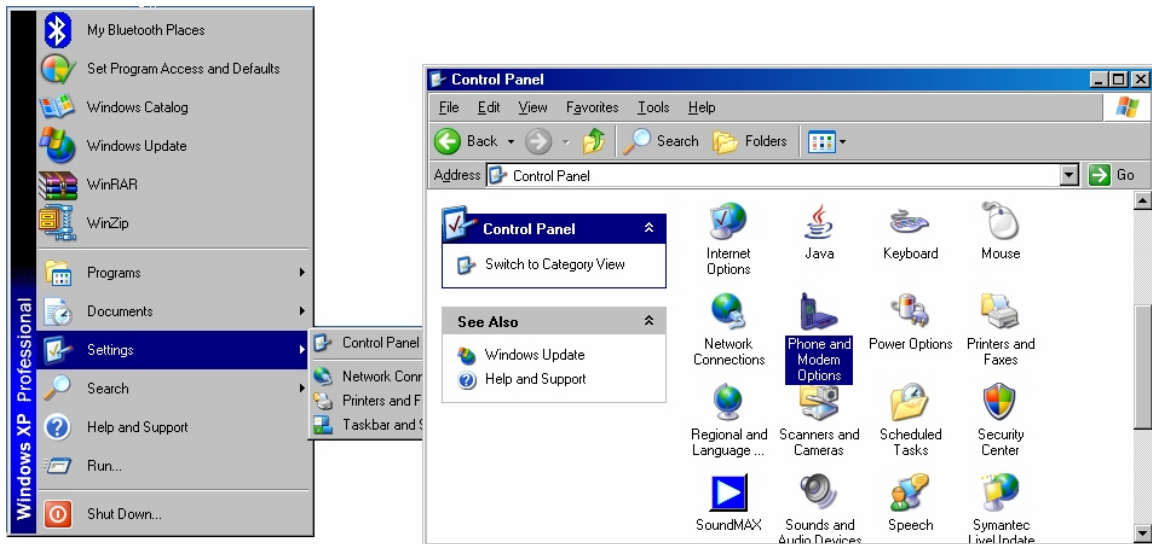
You will need to set up the Dial-Up network. Follow the steps in chapter 4.

3 Setting up a Windows modem driver

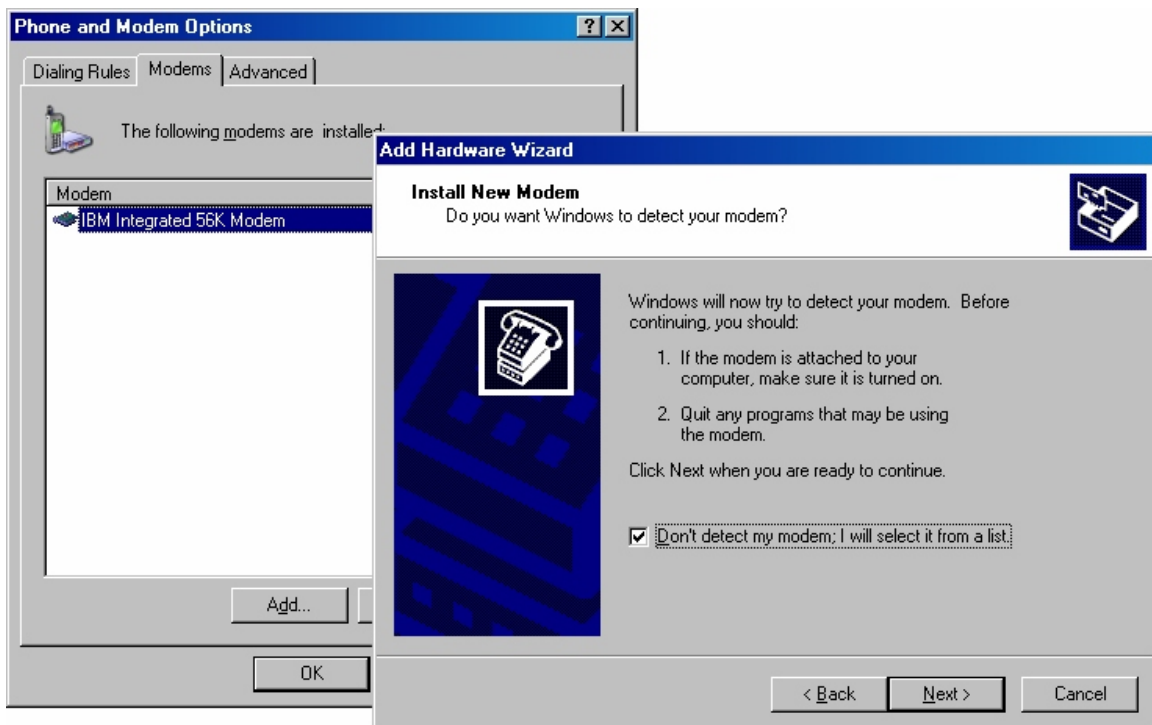
3.1 Adding a new modem

If no SIM-T02-115200 modem has been installed, add a new standard modem to the modem section of the control panel.

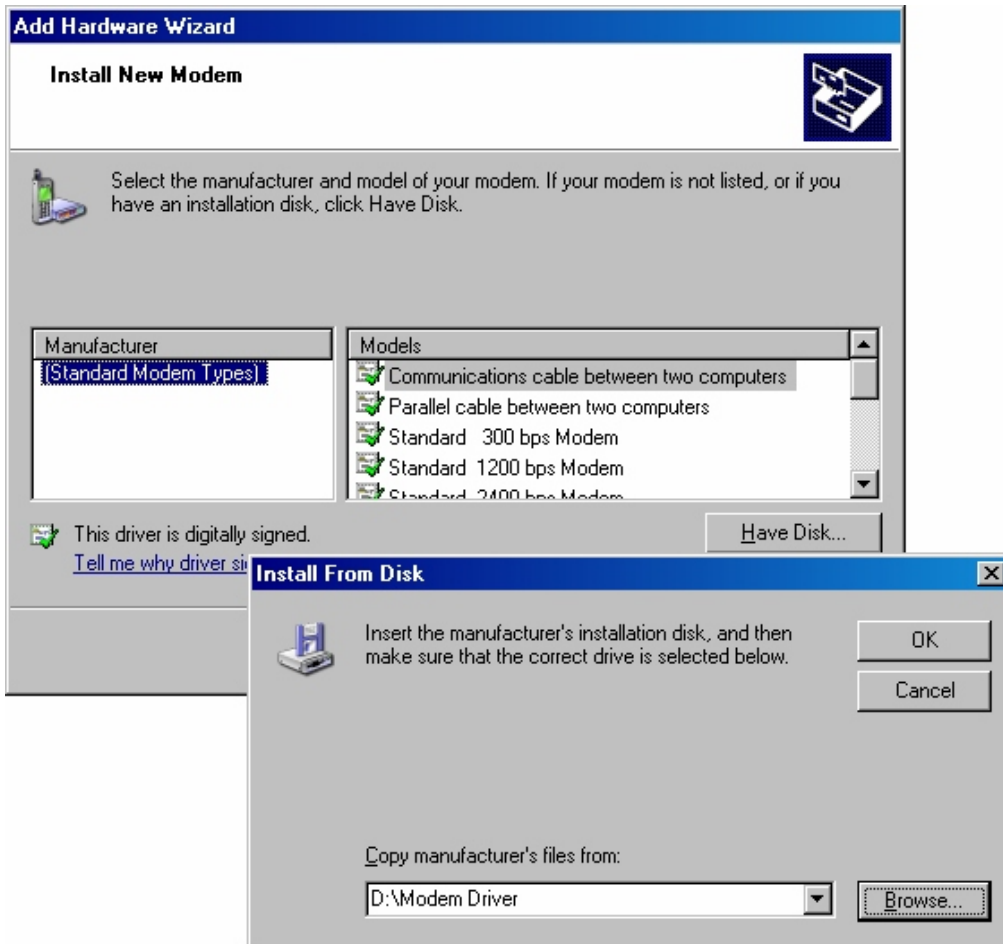
1) Click **Start -> Setting -> Control Panel:**



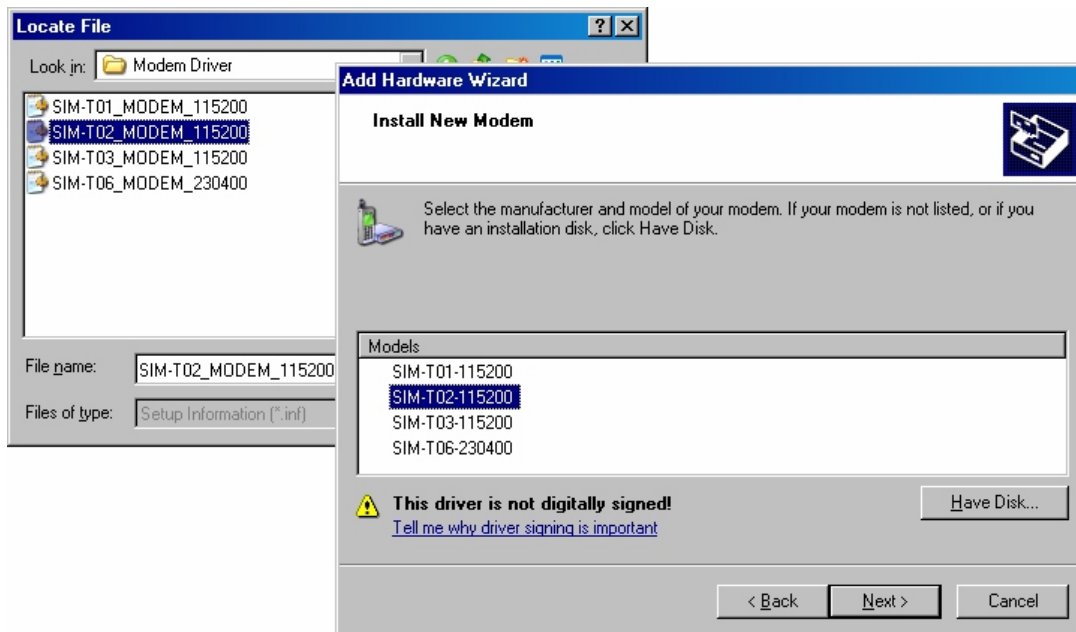
2) Then -> **Phone and Modem option -> Modem -> add:**



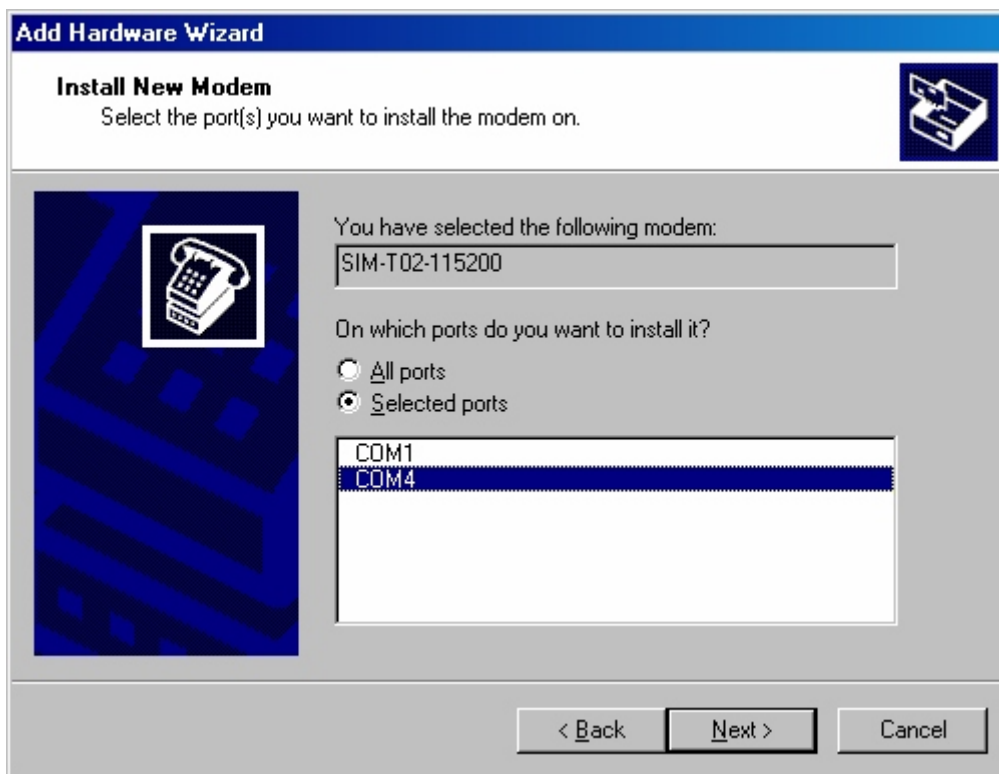
3) Click **NEXT -> Have Disk -> Browse:**



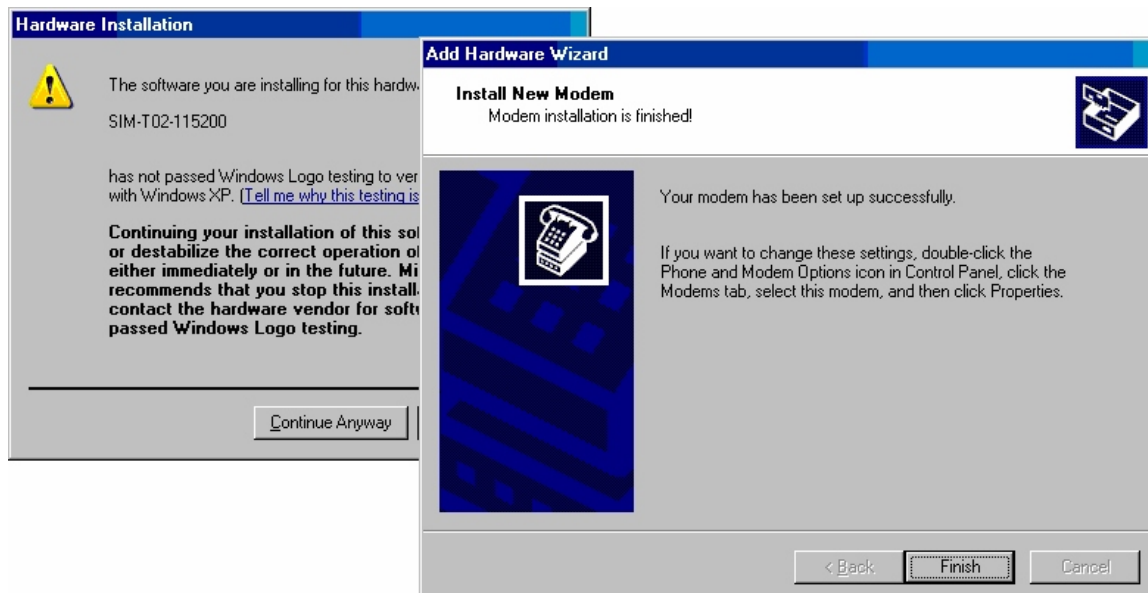
4) Click **Browse**, locate the modem drive, such as D:\Modem Driver, use the label of your driver CD, replace the letter D and select SIM-T02-115200.inf, as:



5) Select: **SIM-T02-115200** -> **NEXT**. Select the port to which the modem is connected:

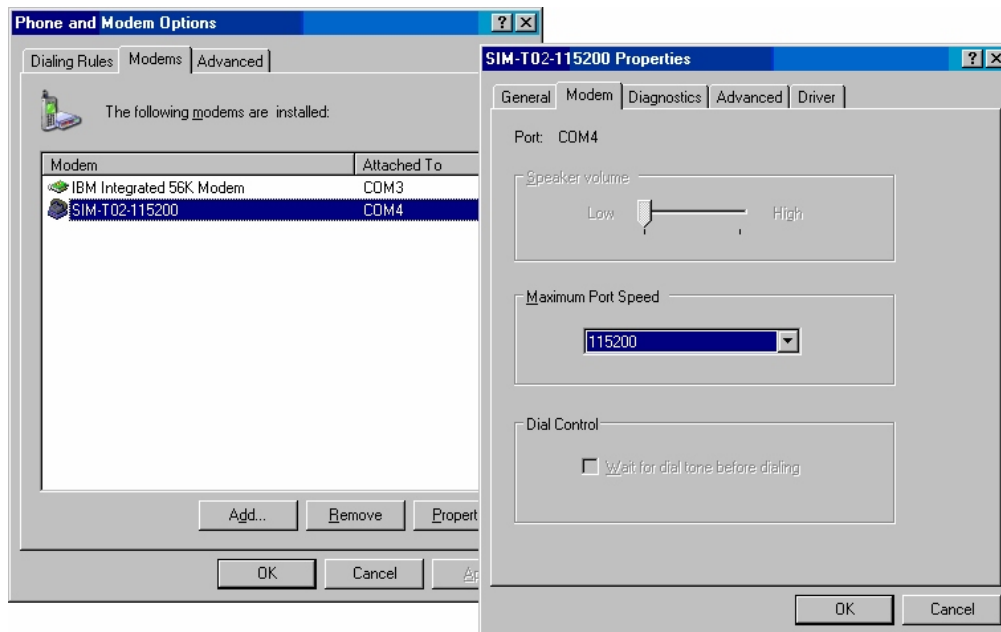


6) Click **NEXT**, complete setup of the modem, if popup alarm is shown, select **Continue Anyway**:

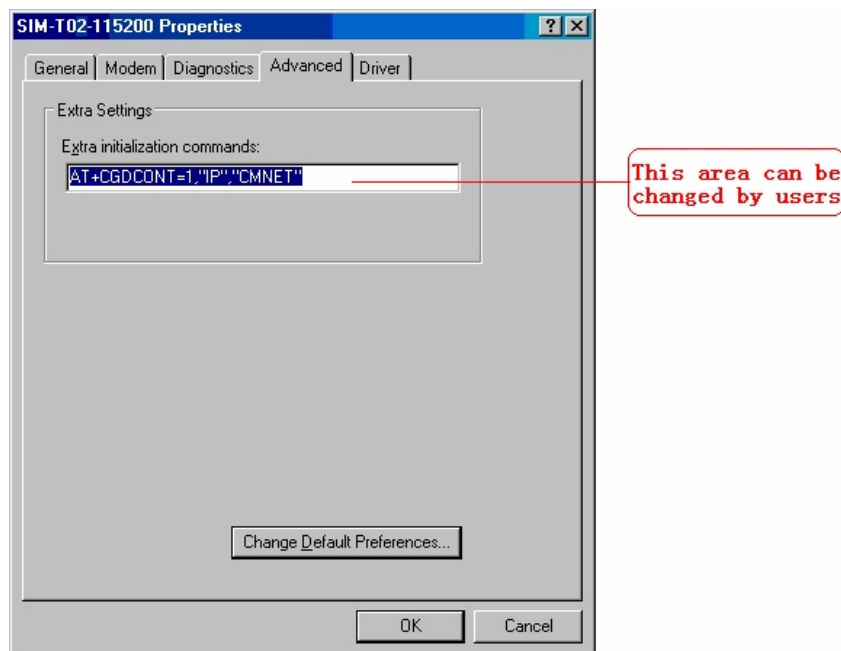


3.2 Configuring the modem driver

1) Choose installed SIM-T02-115200 modem, click “**Property**” and choose its max. port speed (default value: 115200):



2) Click “**Advanced**” to configure “**Extra setting**” as illustrated in the figures below:

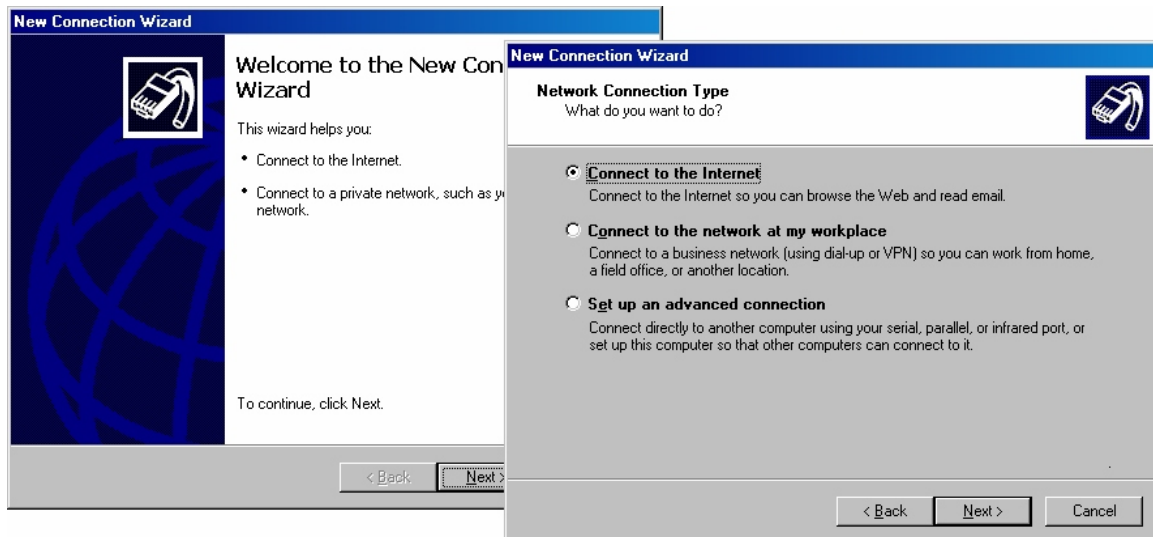


Note: Extra initialization commands: AT+CGDCONT=1,"IP","CMNET", the “CMNET” can be replaced to the name of local APN.

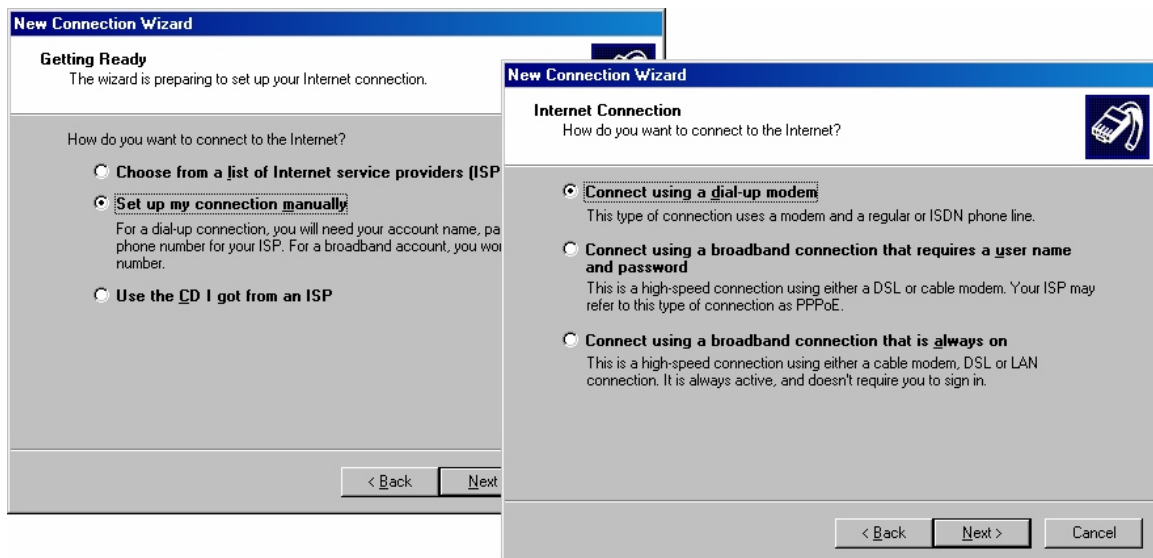
4 Setting the Dial-Up network

4.1 Adding a new connection

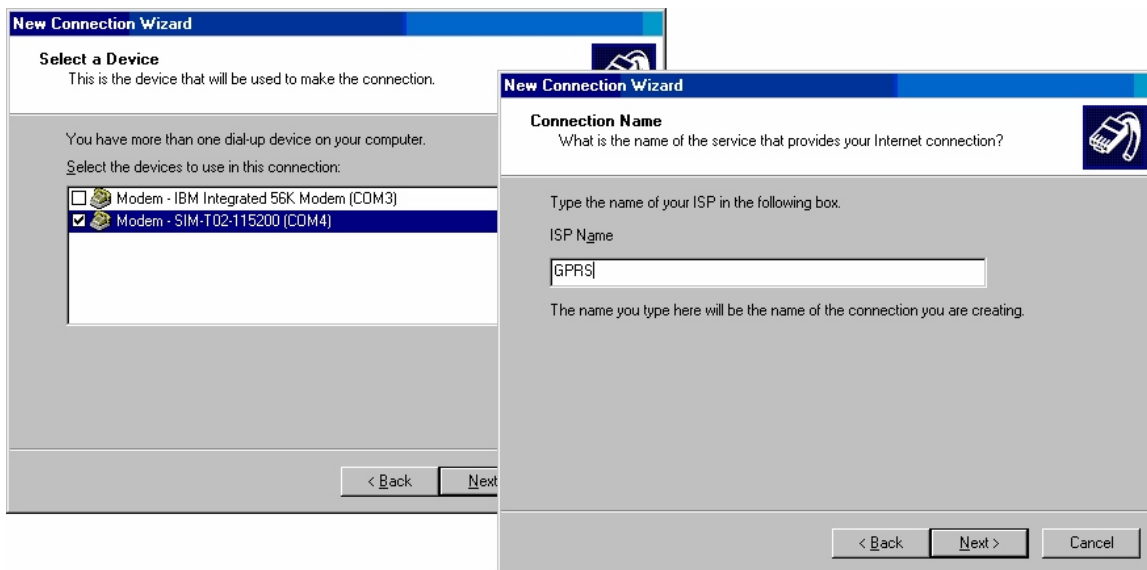
1) On the control panel select “Network and Dial-Up Connections” and then “Make new connection”:



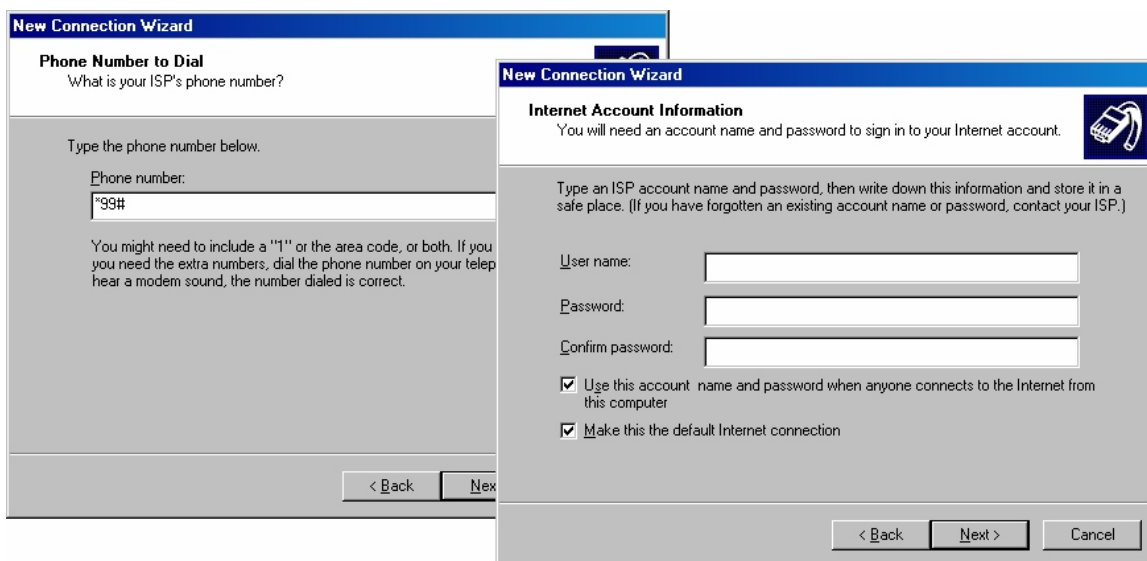
2) Select Connect to the Internet -> NEXT -> Set up my connection manually -> NEXT:



3) Select **Connect using a dial-up modem** -> **NEXT** -> print the ISP name, such as "GPRS":



4) Print ***99#** in the area of **Phone number** -> **NEXT**:



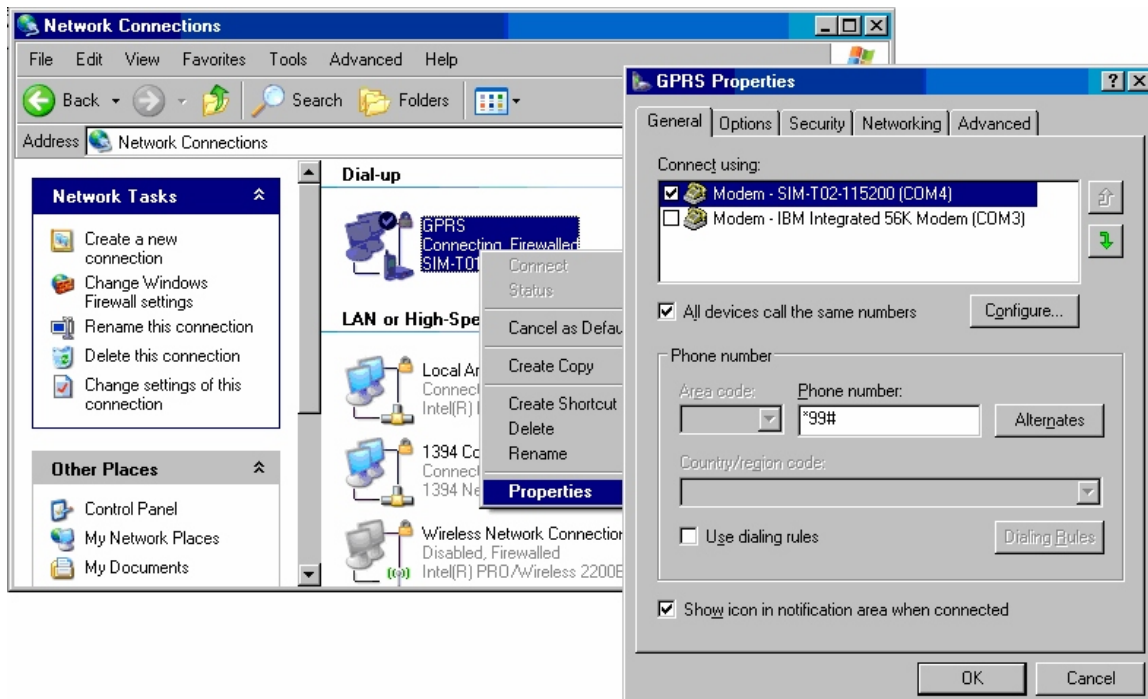
4) Print ***99#** in the area of **Phone number** -> **NEXT**:

5) Complete the new connection wizard.

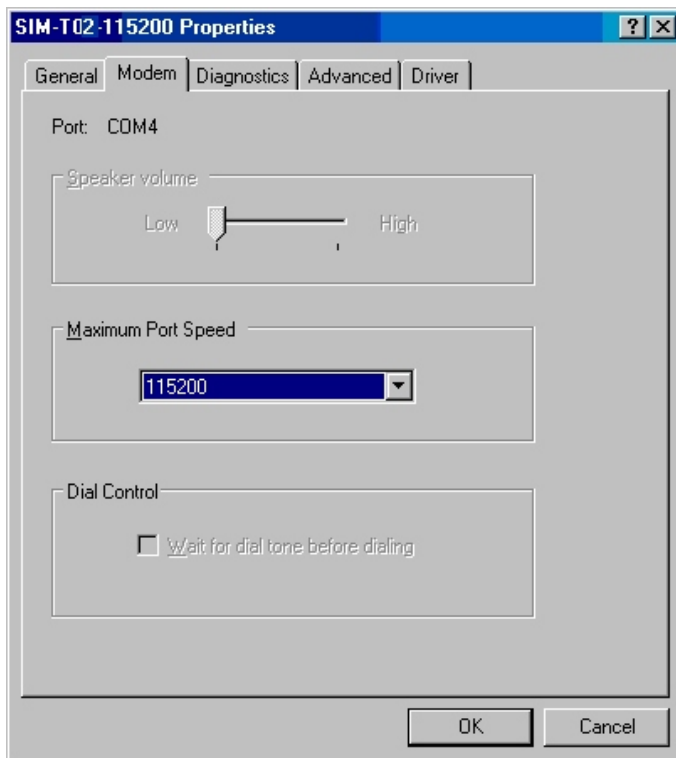


4.2 Configuring the setting

1) On the control panel select Network connection, select GPRS connection and right click, click the Properties, you can change the phone number:



2) Click Configure, you can configure the Maximum Port Speed:

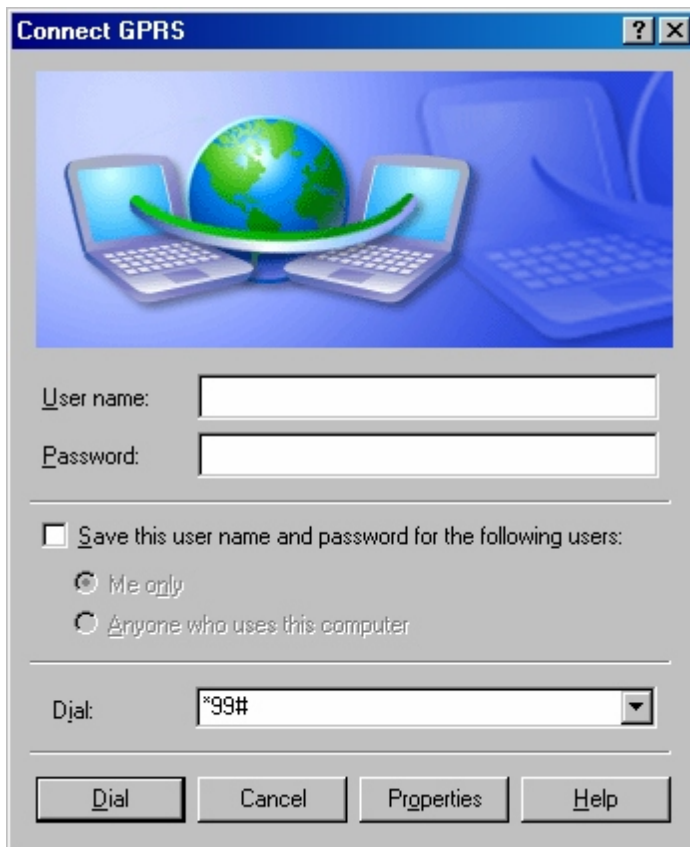


3) Also, you can change the option of Dial-up:

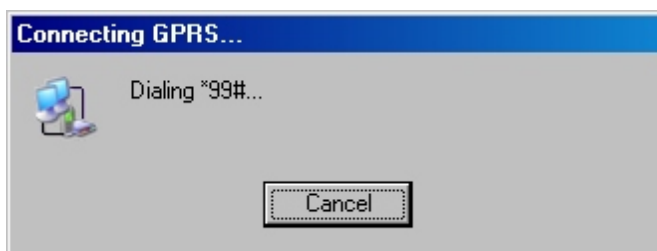


5 Getting started

1) Ensure that “**User name**” and “**Password**” is blank:



2) Click “**Dial**”, you can see the proceeding of connection:



3) When the dial completed, you can transfer the data from GPRS.