

Connecting CyBro-2 and NPort DE-311

TN-004



Cybrotech Ltd
14 Brinell Way, Harfreys Industrial Estate
Great Yarmouth, Norfolk, Nr31 OLU - UK
tel: +44 (0)1493 650 222
www.cybrotech.co.uk
info@cybrotech.co.uk

Introduction

This document describes connecting CyBro-2 and NPort DE-311 serial to Ethernet converter in order to:

- a) Build the CyBro-2 network, using Ethernet infrastructure
- b) Connect CyBro-2 to PC through Ethernet network

Hardware requirements:

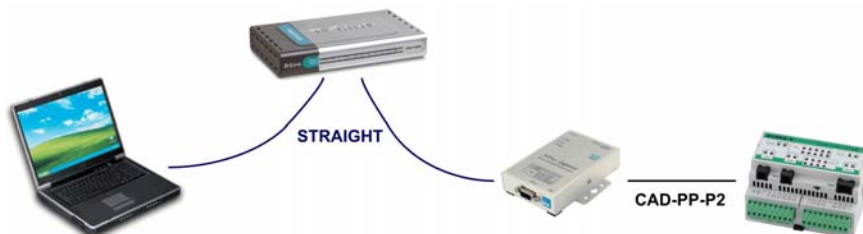
- CyBro-2
- NPort DE-311
- Ethernet switch
- Ethernet cross over cable
- Ethernet straight cable
- CyBro programming cable (CAD-PP-P2)

Software requirements:

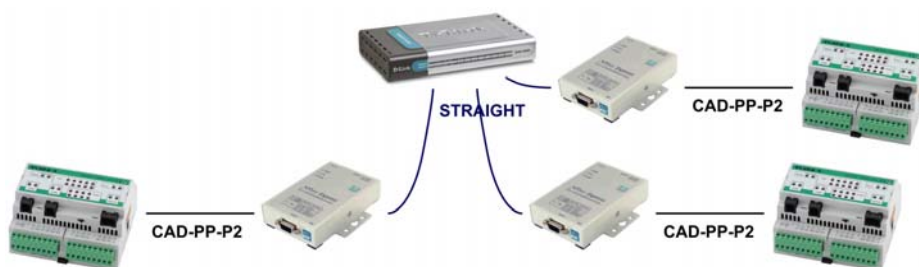
- CyPro 2
- NPort Management Suite

Different connections:

- CyBro-2 to PC



- CyBro-2 network (using Ethernet switch)

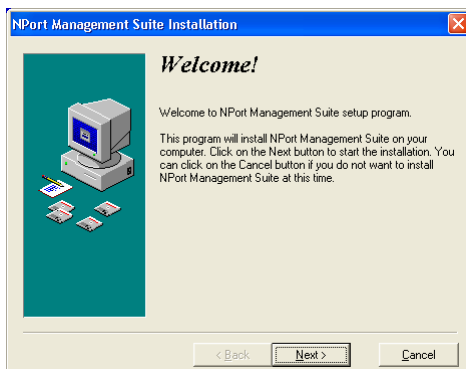
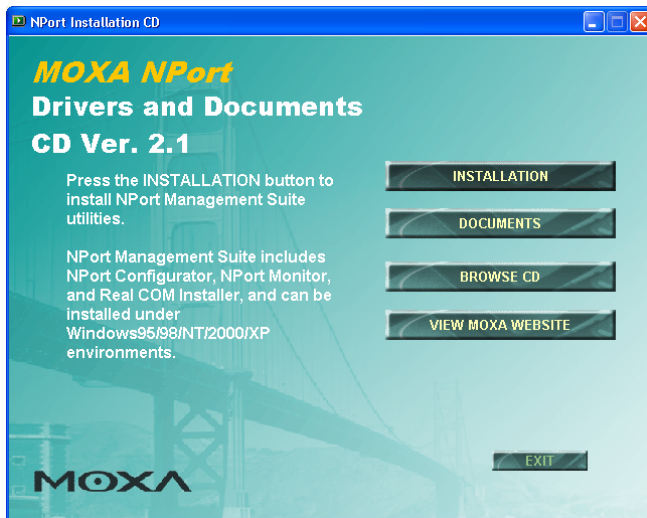


- CyBro-2 network (two CyBros connected with cross over cable)

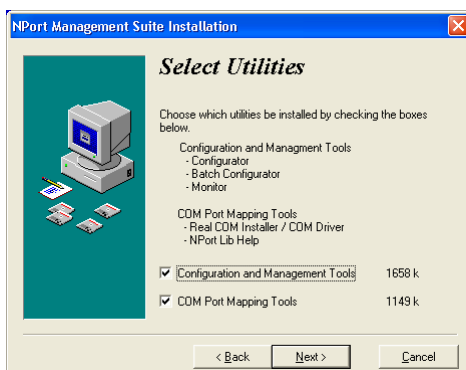


NPort Management Suite installation

1. Insert CD provided with the NPort DE-311 module. Click the **installation** button:

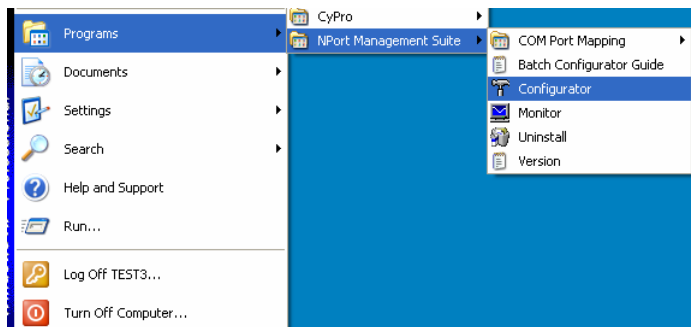


2. Select both options:

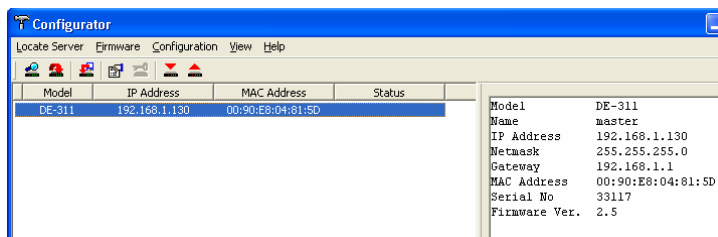
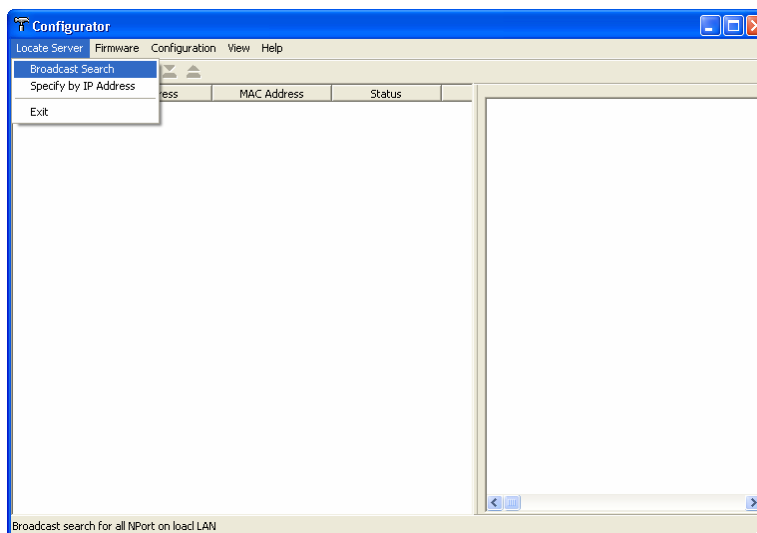


Run the Configurator software

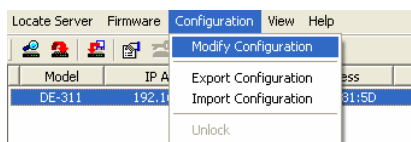
1. Start the Configurator software:



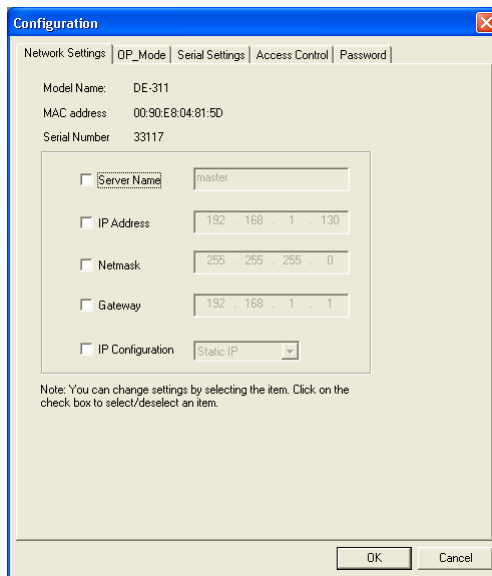
2. Locate server / Broadcast Search:



3. When the server DE-311 is located select the **Modify Configuration**:

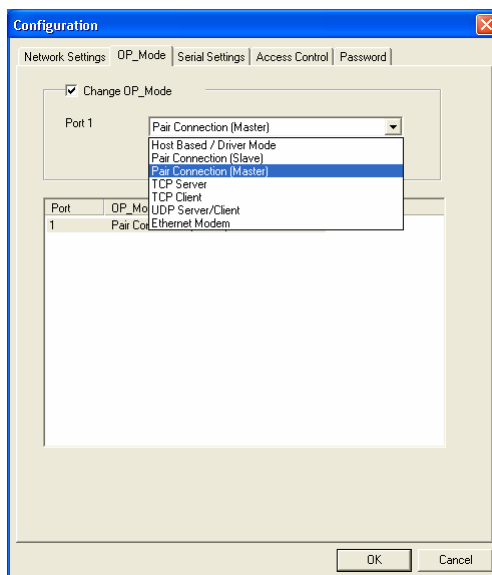


4. Select the tab **Network Settings**:



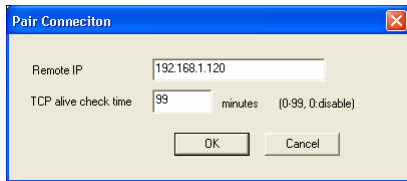
Write down the Server Name for easy identification. Select an IP Address and Netmask that best fit your network environment (if necessary consult your network administrator). Select the Static IP Configuration.

5. Select the tab **OP Mode**:



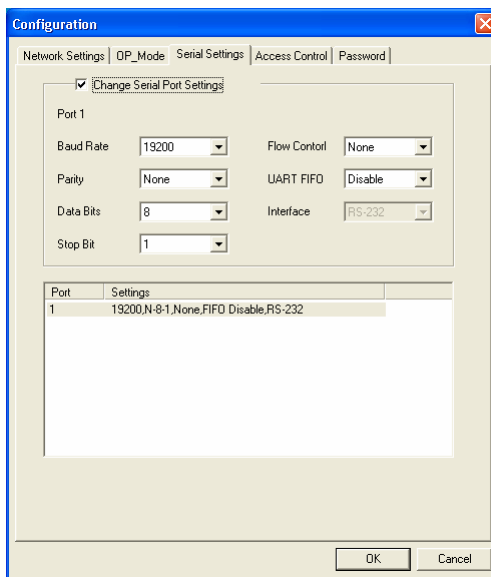
- a) CyBro network:
For one device in the network (master) select **Pair Connection (Master)** and for all others select **Pair Connection (Slave)**.
- b) Connection between CyBro and PC:
OP_Mode: **Host Based / Driver Mode**

6. Click the **More Settings** button and write Remote IP:



Write Remote IP of the master NPort DE-311 in the CyBro network only for NPort DE-311 devices in the slave mode.

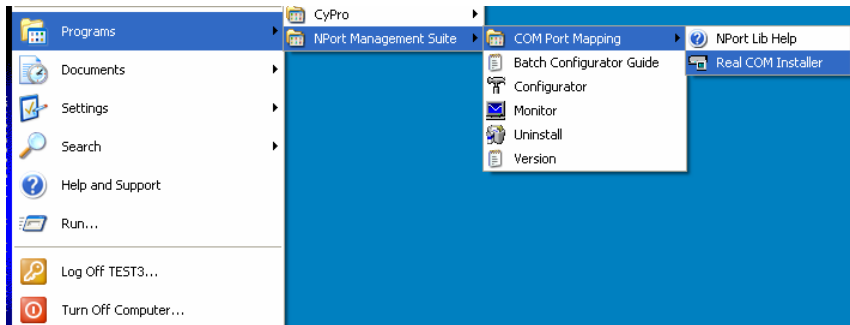
7. Select the tab **Serial Settings**:



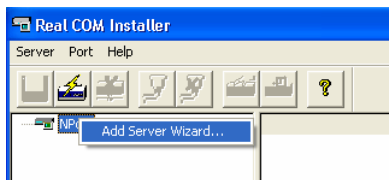
8. Confirm configuration changes with OK and close the window Configuration.

COM Port Mapping

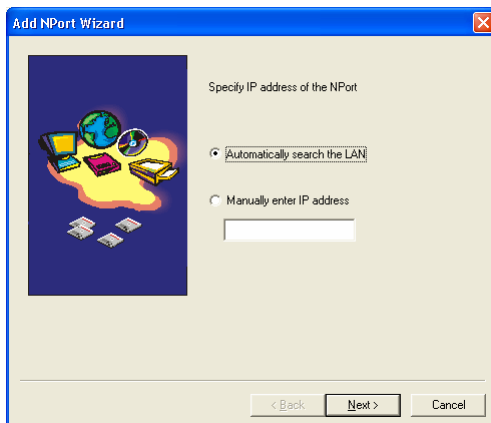
1. Start the Real COM Installer software:



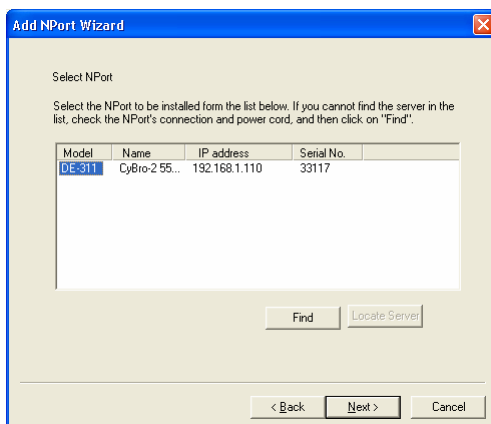
2. Use the **Add Server Wizard** for mapping COM port:



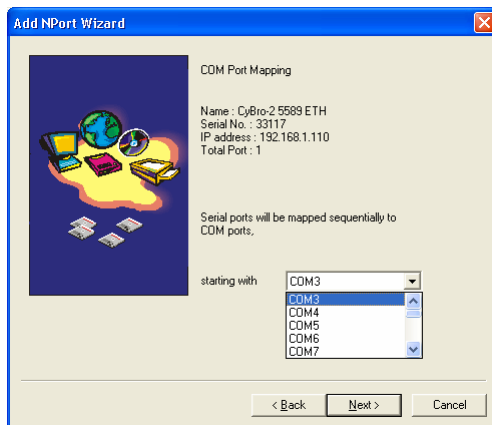
3. Automatically search for the NPort DE-311 adapter:



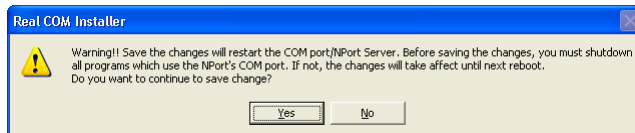
4. Select the NPort DE-311 adapter to be installed:



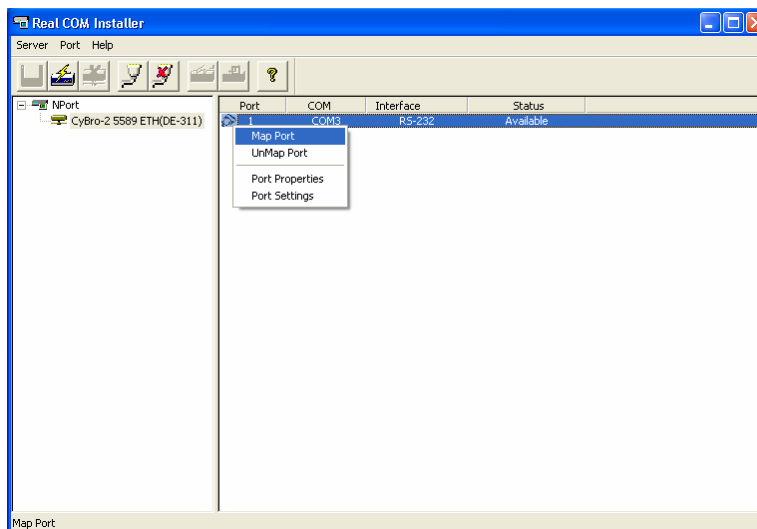
5. Select the port number which will be mapped (used) for communication:



6. Reboot the PC:

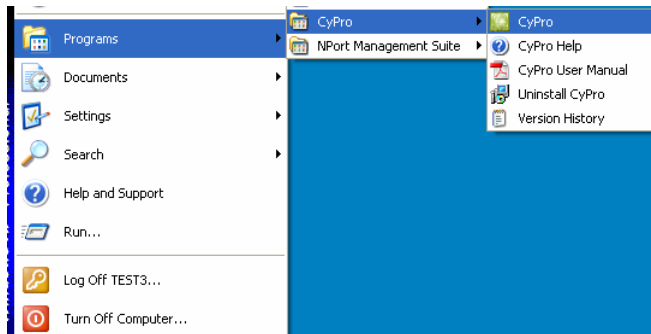


7. Check all settings and if status is not Available click the **Map Port** option:

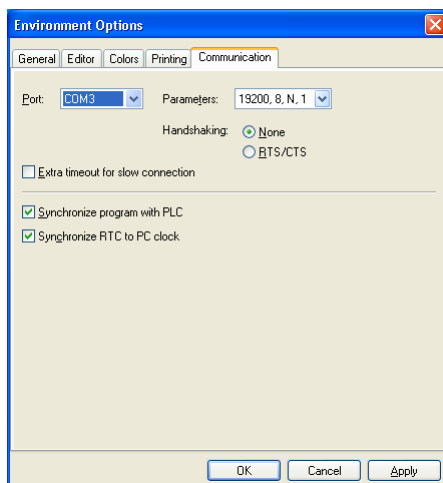


Working with CyPro

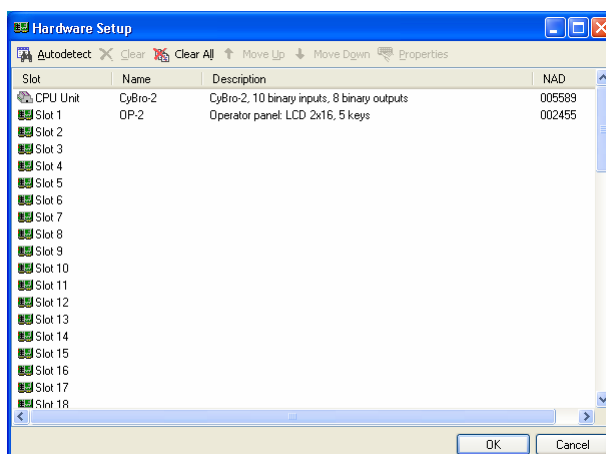
1. Start the CyPro software:



2. From the menu **Tools/Environment Options** select the **Communication** tab. Select the port you choose in the Real Com Installer.

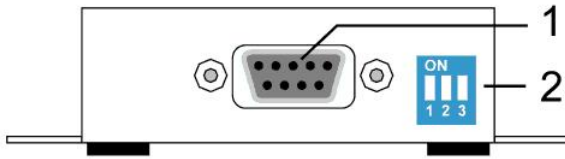


3. Check the communication using the **Hardware Autodetect**.



Appendix

Prepare the NPort DE-311 for the RS232 serial communication:



- 1: Connect NPort DE-311 and CyBro with the cable CAD-PP-P2.
- 2: For the RS232 serial communication put all three switches off.