

Integra automation with Pronto

TN-003



Cybrotech Ltd
14 Brinell Way, Harfreys Industrial Estate
Great Yarmouth, Norfolk, Nr31 OLU - UK
tel: +44 (0)1493 650 222
www.cybrotech.co.uk
info@cybrotech.co.uk

Introduction

Pronto is universal touch screen remote control. It replace IR remote controls for TV, DVD, Stereo system, Integra automation system and other IR controlled devices with only one Pronto remote control.



This document explains connecting Pronto RU950 to Integra automation system. Connection can be achieved on two ways:

- by using prepared programs and interfaces on Pronto
- by building your own interface

Hardware requirements:

- Integra-BM system
- Remote control Pronto RU950
- USB cable

Software requirements:

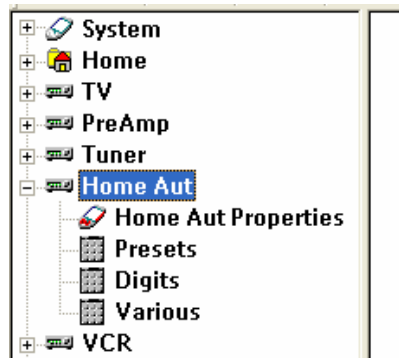
- CyPro program (loaded on Integra-BM system)
- Pronto Edit NG
- Integra remote project file

For creating your own interface or sending project to Pronto RU950 Pronto Edit NG software is needed. It is freeware and can be downloaded at:

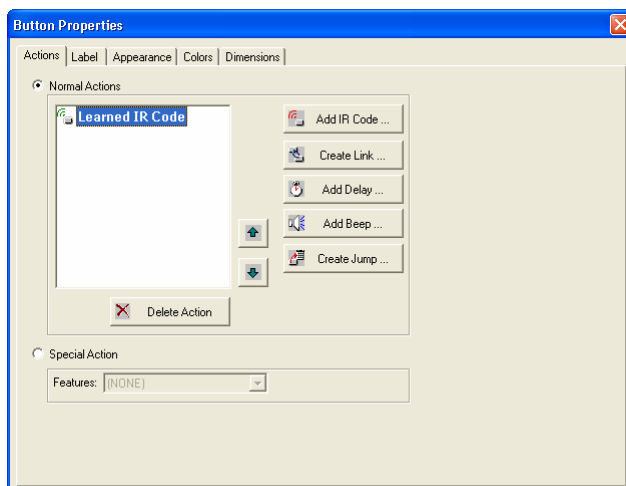
www.pronto.philips.com/

Build your own interface

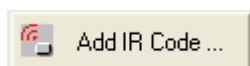
1. Open ProntoEdit NG and open default project in C:/Program Files/Philips/ProntoEdit NG/Samples/RU 950.
2. Default project already contain device called **Home Aut** (home automation), but this device is not compatible with Integra automation. Delete Home Aut in device tree.



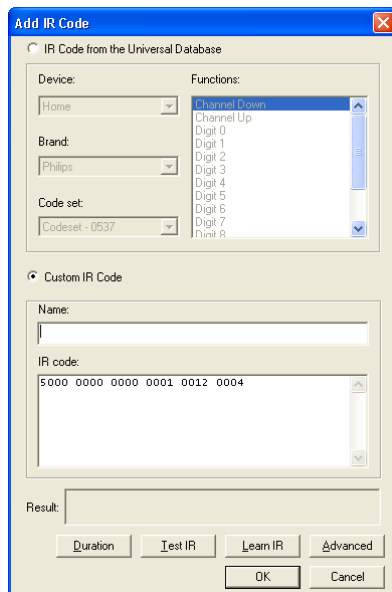
3. Start **Insert/Device** and create new device.
4. Design Integra automation pages.
5. Add IR codes for inserted soft buttons:
 - Double click on button to get button properties window:



- Click **Add IR Code**.

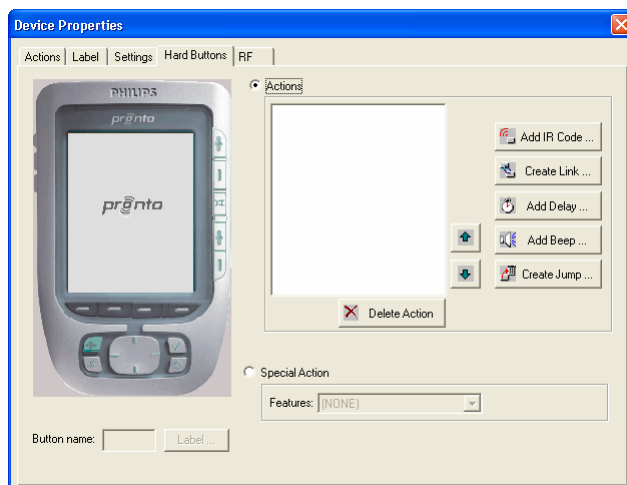


Select **Custom IR Code** and write or copy from IR Code Table in text box:



6. Define actions for hard buttons:

- Double click on device properties and select **Hard Buttons** tab:



- Select button on pronto drawing and click a button for action.
- For adding IR code click **Add IR Code**. In IR code window select **Custom IR Code** and add IR code.

7. Connect Pronto RU950 to PC with USB cable.

-
8. Start **File/Download** to Pronto.
Project is downloaded to Pronto, and automatically started.

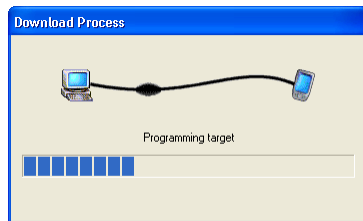


Table with available IR codes:

HEX code for Pronto	variable ir_command
5000 0000 0000 0001 0012 0001	1153
5000 0000 0000 0001 0012 0002	1154
5000 0000 0000 0001 0012 0003	1155
...	...
5000 0000 0000 0001 0012 000A	1162
5000 0000 0000 0001 0012 000B	1163
...	...
5000 0000 0000 0001 0012 003F	1215

When building your Pronto interface in Pronto Edit NG use HEX code for Pronto to define IR code for soft or hard buttons.

Integra-BM system receives IR signals from your Pronto and translates them in integer value of ir_command variable.

Use Integra automation interface

Install Integra project on your Pronto:

1. Open ProntoEdit NG and open project Integra remote.
2. Connect Pronto RU950 to PC with USB cable.
3. Start **File/Download** to Pronto.
Project is downloaded to Pronto, and automatically started.

Integra automation interface description:

Integra remote is project with interface for operating Integra automation system through remote control Pronto RU950. Interface is designed for use in typical house or apartment.

When starting Integra remote project for the first time Pronto goes to so called home page screen, with links to available devices.



Home page screen can be also reached with home page hard button:



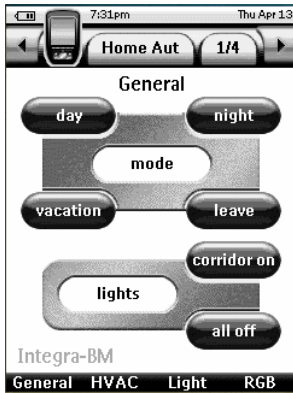
Home Aut button opens Integra automation pages.

There are four different pages for working with Integra automation system. Switching between them is realized through four hard buttons bellow touch screen:

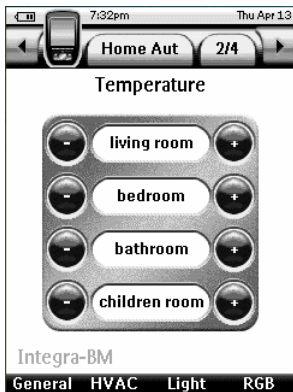


Page **General** is designed for setting major parameters in house automation:

- switching between different setting modes
- turning on lights in corridor
- turning off all lights



Page **HVAC** is designed for setting temperatures in different rooms.

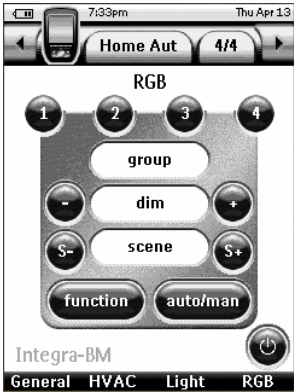


Page **Lights** is designed for managing lights in house:

- switching lights in different rooms
- adjustable ambient lights in living room



Page **RGB** is designed for achieving colorful effects from your RGB (red-green-blue) lights.



Appendix

Pronto keys specification in Integra remote project:

Command	HEX code for Pronto	variable ir_command
general		
day mode	5000 0000 0000 0001 0012 001A	1178
night mode	5000 0000 0000 0001 0012 001B	1179
vacation mode	5000 0000 0000 0001 0012 001C	1180
leave mode	5000 0000 0000 0001 0012 001D	1181
corridor lights on	5000 0000 0000 0001 0012 000A	1162
all lights off	5000 0000 0000 0001 0012 000B	1163
hvac		
living room -	5000 0000 0000 0001 0012 0020	1184
living room +	5000 0000 0000 0001 0012 0021	1185
bedroom -	5000 0000 0000 0001 0012 0022	1186
bedroom +	5000 0000 0000 0001 0012 0023	1187
bathroom -	5000 0000 0000 0001 0012 0024	1188
bathroom +	5000 0000 0000 0001 0012 0025	1189
children room -	5000 0000 0000 0001 0012 0026	1190
children room +	5000 0000 0000 0001 0012 0027	1191
light		
ambient lights -	5000 0000 0000 0001 0012 0005	1157
ambient lights +	5000 0000 0000 0001 0012 0006	1158
ambient lights off	5000 0000 0000 0001 0012 0007	1159
ambient lights on	5000 0000 0000 0001 0012 0008	1160
living room on/off	5000 0000 0000 0001 0012 0012	1170
kitchen on/off	5000 0000 0000 0001 0012 0013	1171
terrace on/off	5000 0000 0000 0001 0012 0014	1172
corridor on/off	5000 0000 0000 0001 0012 0015	1173
rgb		
group 1	5000 0000 0000 0001 0012 0001	1153
group 2	5000 0000 0000 0001 0012 0002	1154
group 3	5000 0000 0000 0001 0012 0003	1155
group 4	5000 0000 0000 0001 0012 0004	1156
dim -	5000 0000 0000 0001 0012 0011	1169
dim +	5000 0000 0000 0001 0012 0010	1168
scene -	5000 0000 0000 0001 0012 0032	1202
scene +	5000 0000 0000 0001 0012 0034	1204
function	5000 0000 0000 0001 0012 0035	1205
auto/manual	5000 0000 0000 0001 0012 0036	1206
rgb on/off	5000 0000 0000 0001 0012 000C	1164

Related documents or files:

File: Integra remote.pcf (contains Integra remote project)

To access file, open Attachments tab, select file and press Save.